

USER MANUAL

TRIPOD DOUBLE HEAD

PC. 915507/ 915510



CERTIFIED PRODUCT



AUSTRALIA & NZ STANDARDS

AS/NZS 5532:2013 (BMP No. 672858)

This equipment is intended for use by people who have received proper training and are competent.

1300 100 120

www.austlift.com.au

AUSTRALIAN LIFTING CENTRE PTY LTD

Please read and understand the manufacturer's instructions for each component or part of the complete system. Manufacturer's instructions must be followed for proper use, care, and maintenance of this product. These instructions must be retained and be kept available for the user's reference at all times. Alterations or misuse of this product, or failure to follow instructions, may result in serious injury or death.

Note: The user is advised to keep this user instructions document for the life of the product.

1. INTRODUCTION & APPLICATION

These Tripods 915507 & 915510 are designed to minimize the risk of/provide protection against the danger of falling from heights. However, always remember that no item of PPE can provide full protection and care must always be taken while carrying out the risk related activity.

2. PERFORMANCE AND LIMITATIONS OF USE

These Tripods have been tested in accordance with EN795:2012 Type B, AS/NZS 5532 and have achieved the following performance levels:

EN 795:2012 test	Result/Comment
General Requirements for Anchor devices (Clause 4.2)	Securely connected eyebolts used for connection to PPE. Thus attachment points cannot become detached unintentionally. (PASS). All locking pins attached by cables, thus no unlocked components evident (PASS). No sharp edges (PASS).
Static Strength (Clause 4.4.2.3)	Sustained a force of 12 kN for 3 minutes (PASS). Sustained a force of 15 kN for 3 minutes (PASS). (AS/ZS 5532)
Dynamic Performance (Clause 4.4.2.2)	When tested with rigid steel mass of 100 kg, the test mass held after test with the device remaining stable throughout. (PASS)
Corrosion Resistance (Clause 4.2.1.1)	No corrosion evident after 48 hours of salt spray testing. (PASS)

3. INSPECTION

Visually inspect the system before each use to ensure that it is in a serviceable condition and is operating correctly. If during inspection, doubts are raised about the safety of the system or a component, these should be replaced either by the manufacturer or a competent person.

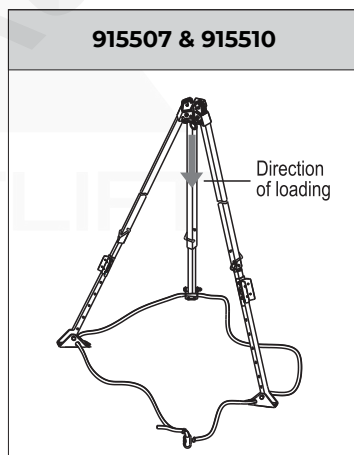
4. PRECAUTIONS

- Ensure the Medical condition of the user does not affect his safety in normal and emergency use.

- The equipment shall only be used by a person trained and competent in its safe use.
- A rescue plan shall be in place to deal with any emergencies that could arise during the work.
- Ensure that the anchor is installed directly above the user's head
- It is essential to verify free space required beneath the user at work place before each occasion of use so that in case of a fall there will be no collision with ground or other obstacle in the fall path.
- Do not make any alterations or additions to the equipment without the manufacturer's prior written consent and that any repair shall only be carried out by personnel trained by the manufacturer & duly authorized by him.
- The equipment shall not be used outside its limitation, or for any purpose other than that for which it is intended.
- When intended to be used in fall arrest system, it is essential for the safety of the user that the anchor device or anchor point should always be positioned and the work carried out in such a way as to minimize both the potential for falls and potential fall distance. Where it is essential that the anchor device/point is placed above the position of the user, the manufacturer shall make a statement to that effect.

5. PRE-USE CHECK

- It is important to check before use, any dangers that may arise by the use of combinations of items of the equipment in which the safe function of any one item is affected by or interferes with the safe function of another.
- Carry out a pre-use check of the system, to ensure that it is in a serviceable condition and operates correctly before it is used.
- Ensure the compatibility of items of equipment when assembled into a system.
- Ensure that tripod legs are well telescoped & can be locked at different height. Movement of Tripod Shoe should be free & there should not be present any rust on any part of anchor device. If any discrepancy found during the check it should not be used.



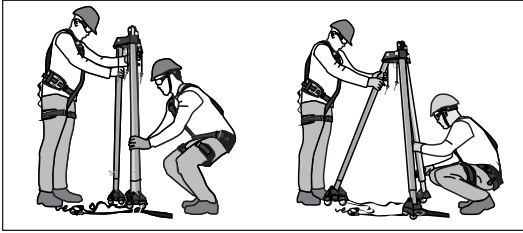
6. FITTING & SIZING

The height of the Tripod is adjustable from 1.15m. to 2.15m(for 7ft) & 1.90m. to 3.07m (for 10ft) depending on the conditions of the usage.

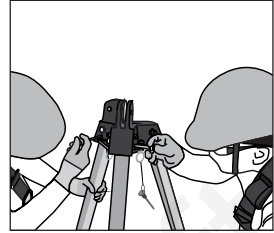
7. ANCHORAGE STRENGTH

Ensure that the structure / ground on which the tripod is standing on is strong enough to with stand a load of 15kN and wont give way during use.

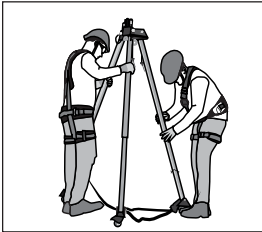
8. INSTRUCTIONS FOR INSTALLATION



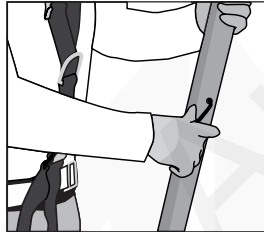
Stretch the three legs of the Tripod outwards so that they lie outside the periphery of the confined space into which entry is required.



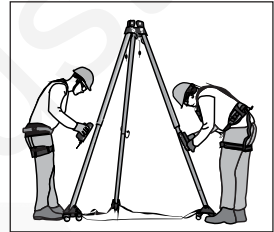
Lock & fix the Tripod by inserting the locking pins so that it stands firmly on the ground.



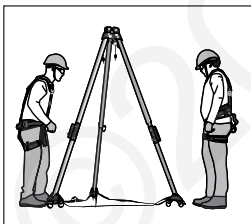
Now adjust the height upward or downward by adjustments provided on the three telescopic legs.



Once the required height is reached, ensure that the adjustment points are locked properly.



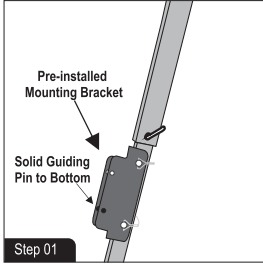
Now install & fix the Universal Brackets on the Tripod Legs to install winch & self-retracting lifeline, further.



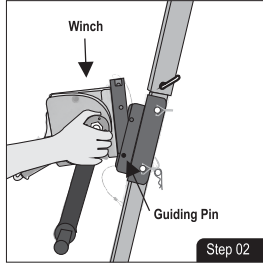
Now the Tripod is ready for use.

Note: Note: The Tripod can be used with Winches 915506 / 915508 / 915509 and with Retrieval Blocks 915320 / 915321 when used with 915512 Retrieval Bracket.

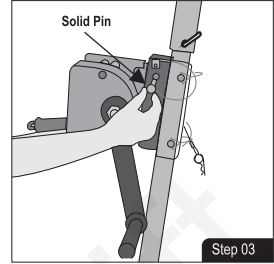
9. INSTRUCTIONS FOR INSTALLATION OF WINCH (915505 / 915508 / 915509) ON TRIPOD (915507/915510)



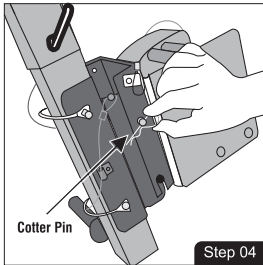
Locate the tripod leg that has pre-installed mounting bracket for installing the winch.



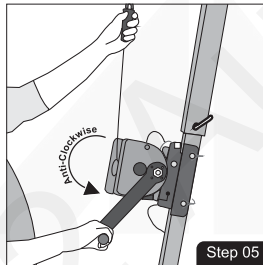
Place the winch on the mounting bracket of the tripod leg and insert the guiding pin into the slot.



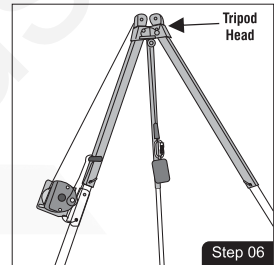
Use solid pin for locking the winch on pre-installed mounting bracket of tripod leg.



Lock the solid pin on mounting brackets using cotter pin.

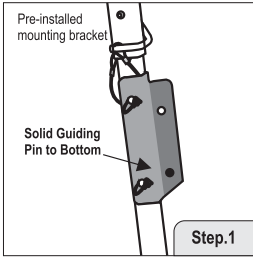


Pull out the handle of the winch outside and rotate it anti-clockwise to release the steel wire. Keep on releasing till you are able to release enough length such that it can pass over the pulleys of the tripod and get suspended vertically downwards.

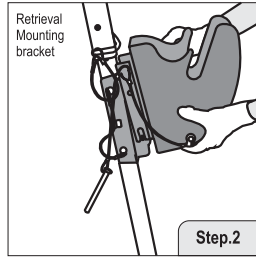


Winch is installed and now the tripod is ready for its claimed usage.

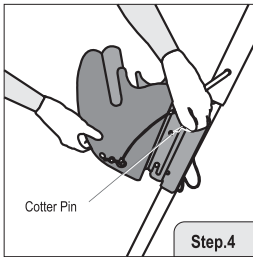
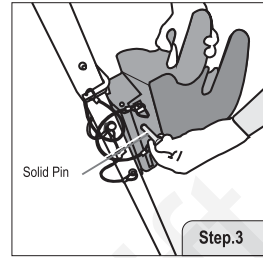
10. INSTALLATION OF RETRIEVAL BLOCK (915320/915321) ON TRIPOD (915507/915510)



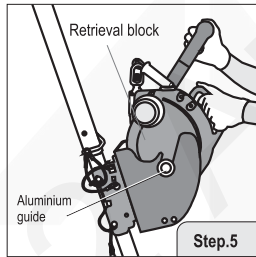
Locate the tripod leg that has pre-installed mounting bracket for installing the retrieval block.



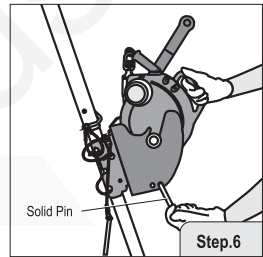
Place the retrieval mounting bracket on the lower mounting bracket pre-installed on the tripod leg and insert the guiding pin into the slot.



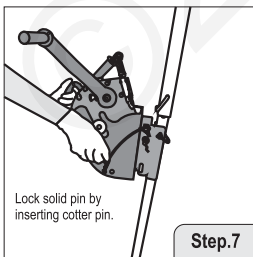
Use solid pin for locking the Retrieval Mounting bracket on pre-installed mounting bracket of tripod leg. Lock the solid pin on mounting brackets using cotter pin.



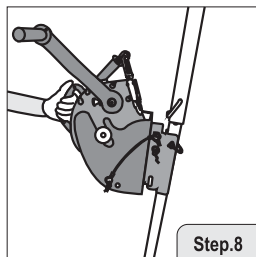
Insert retrieval block in bracket guided by aluminium guide provided on both side of retrieval.



Lock the anchorage eye with bracket followed by solid pin.



Lock solid pin from other end by inserting cotter pin.



Now the retrieval block is ready to be used on tripod.

11. LIMITATIONS

- Tripod should be a personal property of its user.
- It should not be used in highly acidic or basic environments.

12. PRECAUTIONS

- Anchor device is appropriate only for single person use.
- When Anchor device is used as part of a fall arrest system, the user shall be equipped with a means of limiting the maximum dynamic forces exerted on the user during the arrest of a fall to a maximum of 6 kN.
- There is no deflection on the anchor device & there is no displacement of the Anchor point during the services.
- Webbing used in Tripod legs are made up of Nylon material.
- Anchor device should only be used for personal fall protection equipment and not for lifting equipments.
- It is advisable to use the dorsal attachment D-Ring of the harness for connection.
- A full body harness (Confirming standard AS/NZS 1891.1) is the only acceptable body holding device that can be used in fall arrest system.
- It is essential for the safety of user that if the product is resold outside the original country of destination, the reseller shall provide instruction for use, for maintenance, for periodic examination and for repair in the language of country in which product is to be used.
- When the equipment become wet, either from being in use or when due to cleaning. It should be allowed to dry by itself and be kept away from open fire or any other source of heat.
- No lubrication to be used on device.

13. COMPATIBILITY

To optimize protection, in some instances it may be necessary to use the tripod with suitable PPE such as: boots/gloves/helmet and ear protection. In this case, before carrying out the risk-related activity, consult your supplier to ensure that all your protective products are compatible and suitable for your application.

14. REPAIR

If the product becomes damaged, it will NOT provide the optimum level of protection, and therefore should be immediately removed from service. It needs to be inspected to see if it is replaced or repaired. Never use the damaged product. Repair is only permitted by the manufacturer or a nominated repair centre or individual approved by the manufacturer.

15. CLEANING & MAINTENANCE

In case of minor soiling, wipe the tripod with cotton cloth or a soft brush. Do not use any abrasive material. For intensive cleaning wash the tripod in water at a temperature between 30°C to 60°C by using a neutral detergent (pH 7). The washing temperature should not exceed 60°C. Do not use acidic or basic detergents.

16. STORAGE AND TRANSPORT

When not in use, store the tripod in a well-ventilated area away from heavily acidic or basic environment. Never place heavy items on top of it. Also ensure that the tripod is stored away from chemically hazardous environment. Preferably storage should be in a dry environment. Always use manufacturer's standard packaging during transportation to protect it from damage or moisture.

17. WITHDRAWAL FROM USE

If the system has been used to arrest a fall, it should be removed from service and returned to the manufacturer or a competent repair centre for servicing and re testing.

18. WARNING

- Do not make any alteration or additions to the equipment without the manufacturer's prior written consent and repair shall only be carried out by personnel trained by the manufacture & duly authorized by him.
- The equipment shall not be used outside its limitation, or for any purpose other than that for which it is intended.

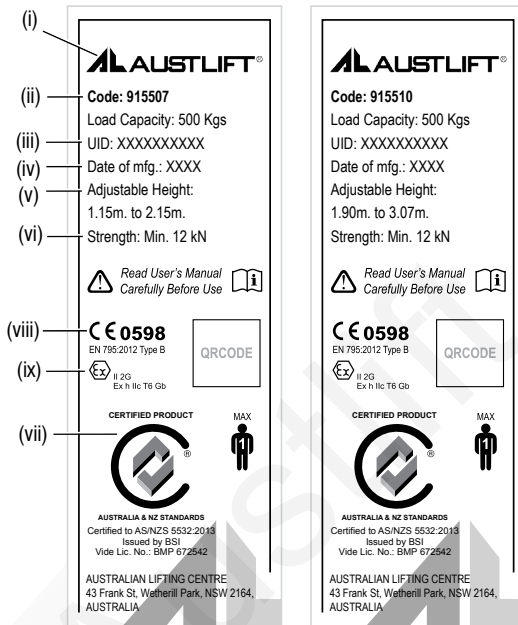
19. PERIODIC EXAMINATION

- It is important to conduct regular periodic examination of the product because the safety of the user depends upon the continued efficiency & durability of the product.
- The frequency of examination should be at least once in a year however it can be more than once if legislation requires, or frequency of use is high or environmental conditions have an adverse effect on it eg excessive rain, sea side environment, excessive heat etc.
- It is emphasized that the examination be conducted only by a competent person and strictly in accordance with the manufacturer's periodic examination procedures.
- It is also advised that the competent person be duly trained and authorized by the manufacturer.
- Ensure that all markings on the product are legible and can be clearly read.
- It is the responsibility of the user to keep the below record card for last inspection & next inspection date updated by entering the details mentioned in it.
- User is advised to keep the User Instructions document for the life of product.

20. MARKING:

The Tripod is marked with:

- (i) Identification of the manufacturer
- (ii) Product code
- (iii) Unique serial number
- (iv) Date of Manufacture
- (v) Adjustable height
- (vi) Strength
- (vii) The BSI mark showing that the product meets the requirements of Australia/NZ standards
- (viii) The CE mark showing that the product meets the requirements of the PPE Regulation (EU) 2016/425
- (ix) Atex Marking



21. LIFESPAN

The estimated product Lifespan is 10 years from the date of manufacture. The following factors can reduce the Lifespan of the product: intense use, contact with chemical substances, specially aggressive environments, extreme temperature exposure, UV exposure, abrasions, cuts, violent impacts, bad use or maintenance.

Product must be inspected annually by a competent person, they will ensure suitability for further use, inspections need to be recorded / logged.

22. DISCLAIMER

Prior to use, the end user must read and understand the manufacturer's instructions supplied with this product at the time of shipment and seek training from their employer's trained personnel on the proper usage of the product. Manufacturer is not liable or responsible for any loss, damage or injury caused or incurred by any person on grounds of improper usage or installation of this product.

EQUIPMENT RECORD

Product:		
Model & type/identification	Trade name	Identification number
Manufacturer	Address	Tel, fax, email into use
Year of manufacture	Purchase date	Date first put into use
Other relevant information (e.g. Document number)		

PERIODIC EXAMINATION AND REPAIR HISTORY

Date	Reason for entry (periodic examination or repair)	Defects noted, repairs carried out and other relevant information	Name and signature of competent user	Periodic examination next due date

ALC UIN4PC91507/10/13..22



AUSTLIFT®

WHOLESALEERS OF LIFTING, RIGGING, LOAD RESTRAINT
& HEIGHT SAFETY PRODUCTS

AUSTRALIAN LIFTING CENTRE

1300 100 120

www.austlift.com.au

Head Office (NSW)



43 Frank Street
Wetherill Park, NSW 2164



Ph : 02 9757 2277

QLD Office



7 Durbell Street
Acacia Ridge, QLD 4110



Ph : 07 3272 0777

WA Office



42 Mulgool Road
Malaga, WA 6090



Ph : 08 9248 6674

VIC Office



475A Dohertys Road
Truganina, VIC 3029



Ph : 03 9314 5525